

The role of the NIHR Clinical Research Networks in helping to deliver your research

Harriet Corbett

North West Coast NIHR Specialty Research Lead (Children)
Consultant Paediatric Urologist, Alder Hey, Liverpool

NIHR | National Institute
for Health Research

Health and
Care
Professionals

Researchers

Patients,
Carers and the
Public

Partners and
Industry

Search...

About us

Home > About us



The NIHR



- **Established in 2006**
- **Largest national funder of health and care research in Europe**
- **Funded primarily by the Department of Health and social care**
- **Work in partnership with NHS, Universities, local government, other funders, patients & public**
- **“provide the people, facilities and technology that enables research to thrive”**

Partnering with other public funders, charities and industry to maximise the value of research to patients and the economy

Funding, supporting and delivering high quality research that benefits the NHS, public health and social care

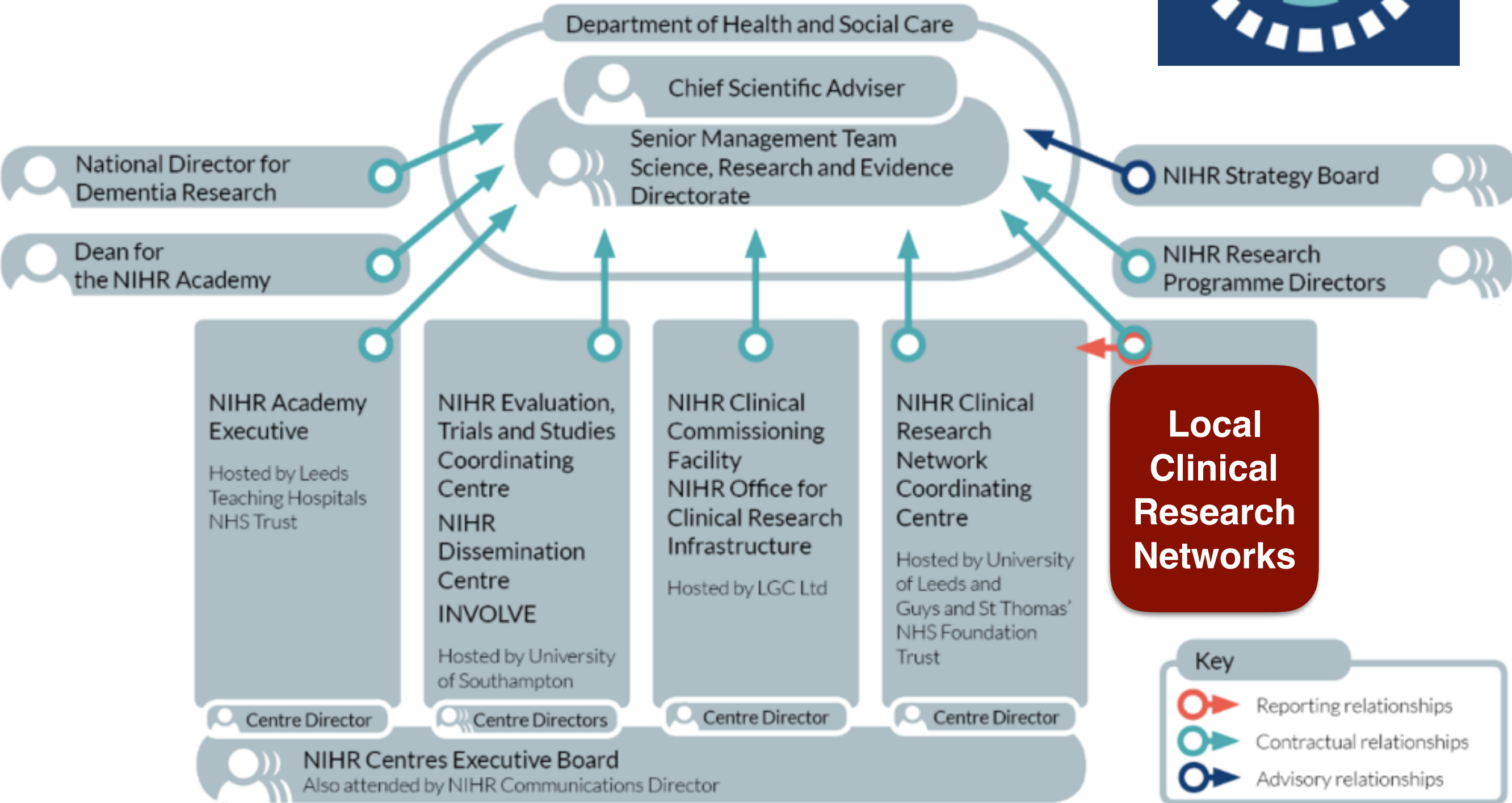
A central blue circle contains the text 'NIHR's mission is to improve the health and wealth of the nation through research'. This circle is surrounded by six stylized red human figures, each sitting on the edge of the circle and facing outwards. The figures are arranged in a ring, with one at the top, one at the bottom, and two on each side. The overall design is clean and modern, using a limited color palette of blue, red, and white.

NIHR's mission is to improve the health and wealth of the nation through research

Investing in world-class infrastructure and a skilled delivery workforce to translate discoveries into improved treatments and services

Engaging and involving patients, carers and the public in order to improve the reach, quality and impact of research

Attracting, training and supporting the best researchers to tackle the complex health and care challenges of the future



NIHR Clinical Research Network



- **The CRN **aims** to support **research delivery** by:**
 - **getting studies set up promptly**
 - **providing personnel (e.g. research nurses, data coordinators) and infrastructure to carry out studies**
 - **direct researchers to local patient populations and research capacity to help achieve recruitment targets**

CRN Objectives

(‘HLO’ High level objectives)



- **Increasing the proportion of CRN [Portfolio](#) studies that deliver in line with the study’s planned delivery time and participant recruitment targets**
- **Increasing the number of research participants**
- **Reducing the time it takes for a study to set up and start at each research site**
- **Increasing the number of life-sciences studies supported by the CRN**
- **Increasing the number of health and care organisations active in research**
- **Increasing the number of participants involved in research into dementias**
- **Demonstrating to research participants that their contribution is valued**

2019/20 High Level Objectives

To be included in 2019/20 Performance and Operating Framework

1. Deliver significant levels of participation in NIHR CRN Portfolio studies



2. Deliver NIHR CRN Portfolio studies to recruitment target within the planned recruitment period

3. Increase the number of studies delivered for the commercial sector with support from the NIHR Clinical Research Network



Please note: Objectives 4 and 5 have been replaced by new HLO 9.



6. Widen participation in research by enabling the involvement of a range of health and social care providers

7. Deliver significant levels of participation in the NIHR CRN Portfolio Dementias and Neurodegeneration (DeNDRoN) studies



8. Demonstrate to people taking part in health and social care research studies that their contribution is valued

9. Reduce study site set-up times for NIHR CRN Portfolio studies by 5%



15 'LCRNs'

- all in England



- 1 North East and North Cumbria
- 2 North West Coast
- 3 Yorkshire and Humber
- 4 Greater Manchester
- 5 East Midlands
- 6 West Midlands
- 7 West of England
- 8 Thames Valley and South Midlands
- 9 Eastern
- 10 Kent, Surrey and Sussex
- 11 Wessex
- 12 South West Peninsula
- 13 North Thames
- 14 South London
- 15 North West London



Beyond England



- **Health and Care Research Wales**
- **NHS Research Scotland**
- **Northern Ireland Clinical Research Network**

- **all seem to link**
- **all use 'CPMS' (Central Portfolio Management System)**
- **though have their own criteria for determining eligibility of studies for support & portfolio inclusion**

30 Specialities

Specialties A-I	Specialties I-S
Ageing	Injuries and Emergencies
Anaesthesia, Perioperative Medicine and Pain	Kidney Disorders
Cancer	Liver
Cardiovascular Disease	Mental Health
Children and Young People	Metabolic and Endocrine Disorders
Critical Care	Musculoskeletal Disorders
Dementias and Neurodegeneration	Neurological Disorders
Dermatology	Ophthalmology
Diabetes	Oral and Dental Health
Ear, Nose and Throat	Primary Care
Gastroenterology	Public Health and Prevention
Genomics and Rare Diseases	Reproductive Health
Haematology	Respiratory Disorders
Health Services Research	Stroke
Infection	Surgery

'The Portfolio'



All research studies, **eligible for NIHR CRN support** in England, are included on the NIHR CRN Portfolio.

This gets you:

- Access to the **Study Support Service** - a standard national framework for supporting the planning, set-up and delivery of high quality clinical research in England
- Provision of NHS support as defined by **AcoRD** and/or the equivalent of NHS Support in other settings (e.g. research carried out in social care, care homes, hospices, or public health settings)
- Provision of Research Part B costs as defined by AcoRD (for studies funded by AMRC member charities only)
- Access to relevant **research delivery training, including Good Clinical Practice training**
- **ISRCTN registration** via the **Central Portfolio Management System**.
Registration of non-commercial studies with an interventional component is funded by the Department of Health and Social Care

'The Portfolio'



Eligibility:

Goes beyond traditional NHS settings (schools, prisons etc)

1. Must meet the definition of research

“the attempt to derive generalisable or transferable new knowledge to answer or refine relevant questions with scientifically sound methods”

excludes routine banking of biological samples or data except where integral to a self contained research project

2. Must have appropriate ethical approval and Health Research Approval where required

3. Must have full research funding

***** the source of funding is the principle determinant of eligibility*****

Funding



- **Automatic:**
 - **studies funded through nationally competitive grant calls administered via NIHR, Research councils, Research & Innovation etc.**
 - **NIHR non commercial Partners are organisations that award research funds as a result of open competition with high quality peer review, fund research that is of clear value to the NHS etc and take account of NHS/social care/public health priorities**
- **Potentially**
 - **Investigator initiated, commercial collaborative research (industry funded but not sponsored), overseas government & charities**
- **NOT if its audit, needs assessment, QI, local service evaluation, sample/data banking**

NIHR resources



CRN provide national and local resources & activities to support health and care organisations, staff, and patients and service users to be research active:

specialist training

information systems to manage and report research

patient and public involvement and engagement initiatives

communications expertise

Delivering studies ‘to plan’ - meaning within the planned timescale and with the right number of participants to make the results meaningful - is of critical importance, which is why the CRN provides the [Study Support Service](#). This helps researchers and the life sciences industry plan, set up and deliver high-quality research in both the NHS and the wider health and social care environment across England. We provide this service for all studies eligible for our support, regardless of location, study type, study size, therapy or research area.

Study Support Service



We provide this service for all studies eligible for support, regardless of location, study type, study size, therapy or research area. Whether your study is medical, diagnostic, pharmaceutical, bio-tech or is looking at healthy populations of people with social care needs, we can help.

Study Support Service



Early Contact and Engagement: help with regulatory submissions, costing, exploring recruitment pathways, optimise delivery

Early Feedback: commercial studies can access clinical experts for bespoke study advice

Site identification: LCRN teams send out study details seeking 'EOI' expressions of interest

Optimising delivery: follows on from early contact, informs the support the study needs

Effective study set up: already a team there to help set up

Performance monitoring: data monitoring tools to help proactively identify and support studies that are struggling

Research Design Service



Got a research idea and not sure how to turn it into a funding application? Talk to our Research Design Service (RDS).

The RDS provides support to health and social care researchers across England on all aspects of developing and writing a grant application including research design, research methods, identifying funding sources and involving patients and the public. Advice is confidential and free of charge.

In an increasingly competitive research environment, securing funding to conduct health and social care research can be difficult and time consuming. Our RDS supports researchers to design high quality research proposals for submission to our research programmes and other open, national, peer reviewed funding competitions for applied health or social care research.

RDS advisers in regional centres across England offer a unique breadth of experience and a proven track record in improving funding applications.

We advise you to contact your regional RDS centre at an early stage in your bid development to discuss your research ideas. Find out more below.



ACoRD



- Attributing the costs of health and social care R&D
- A framework for NHS and partners to identify, recover and attribute the costs of research